

Auction_1FMCU0G93GUB08696

SALE_INDEX	sold-1
PRICE	\$2,500
SALE STATUS	Sold
VNAME	2016 Ford Escape, SE
LOT-NUMBER	0-26488292
CAR-FEATURES	
HAS_KEYS	yes
RUNS_DRIVES	no
ENGINE_STARTS	yes
TITLE-AND-CONDITION	
TITLE TYPE	Salvage
TITLE DESCRIPTION	N/A
PRIMARY DAMAGE	Front end
SECONDARY DAMAGE	N/A
VIN	1FMCU0G93GUB08696
COMMON	N/A
TECHNICAL-SPECS	
ODOMETER	98,042 mi (157,783 km)
ESTIMATED REPAIR COST	\$10,676
AVG. ESTIMATED RETAIL VALUE	N/A
DAMAGE RATIO	N/A
ESTIMATED WINNING BID	N/A
BODY STYLE	SUV 4 DOOR
COLOR	N/A
ENGINE TYPE	2.0L
FUEL TYPE	N/A
CYLINDERS	4
TRANSMISSION	Automatic
DRIVE	
SALE-DATE-LOCATION	
SELLER TYPE	Progressive Casualty Insurance
AUCTION DATE	01-21-2020
AUCTION TYPE	N/A
LOCATION	Southern New Jersey (NJ)
BUYER COUNTRY	N/A
LISTING-HISTORY	
2020-01-21	Sold \$2,500
YEAR	2016
MAKE	FORD
MODEL	ESCAPE
IMAGES	

IMAGE 1

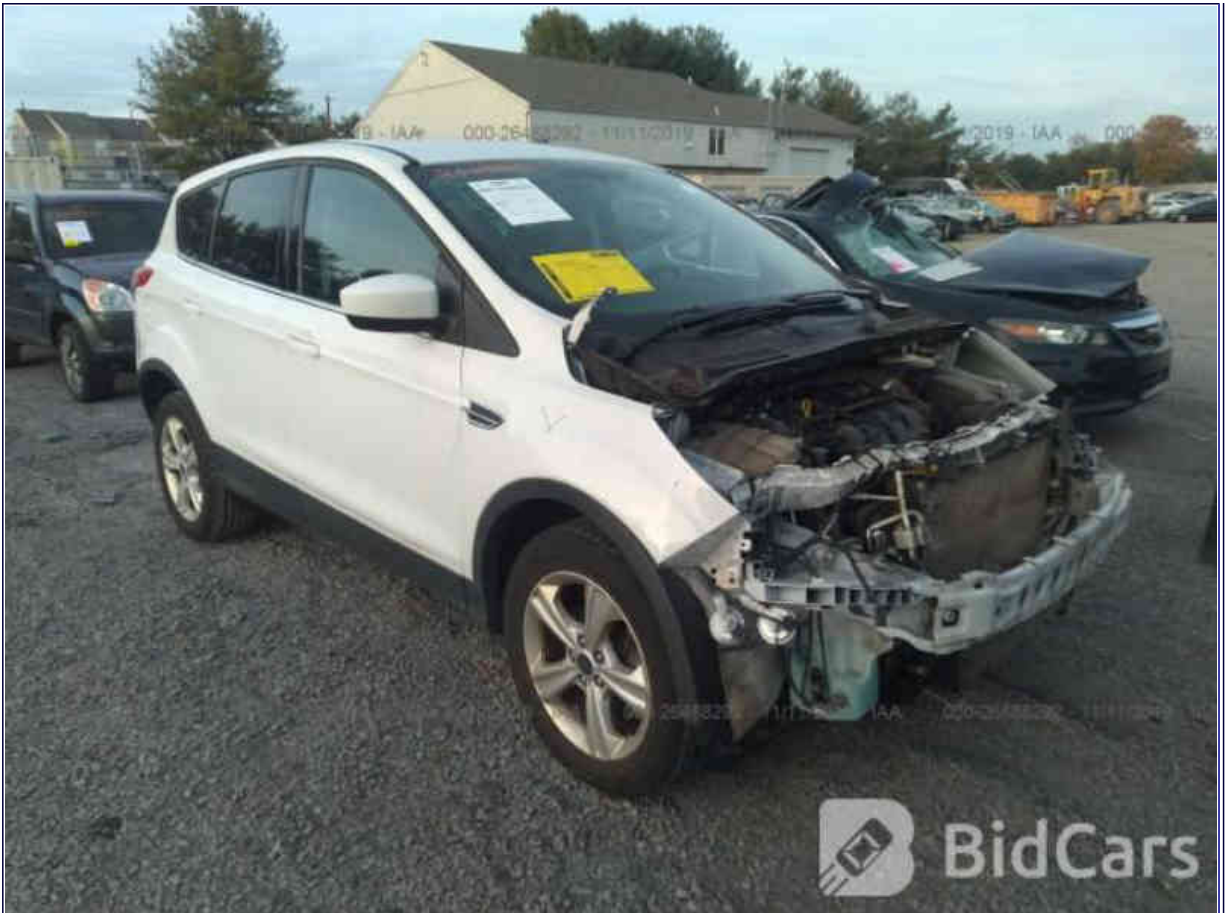


IMAGE 2



IMAGE 3



IMAGE 4



IMAGE 5



IMAGE 6





IMAGE 7

IMAGE 8



2018 - IAA 000-26488292 - 11/11/2019 - IAA 000-26488292 - 11/11/2019 - IAA 000-26488292 - 11/11/2019 - IAA

MFD. BY FORD MOTOR CO.	DATE: 09/15	GVWR: 2159 KG (4760 LB)	
FRONT GAWR: 1125 KG (2480 LB)	REAR GAWR: 1034 KG (2280 LB)		
WITH 235/55R17 99H	TIRES WITH 235/55R17 99H		TIRES
17X7.5J	RIMS 17X7.5J		RIMS
AT 240 kPa/ 35 PSI COLD	AT 240 kPa/ 35 PSI COLD		

THIS VEHICLE CONFORMS TO ALL APPLICABLE FEDERAL MOTOR VEHICLE SAFETY AND THEFT PREVENTION STANDARDS IN EFFECT ON THE DATE OF MANUFACTURE SHOWN ABOVE.

VIN: 1FMCU0G93GUB08696 TYPE: MPV



EXT PNT: YZ

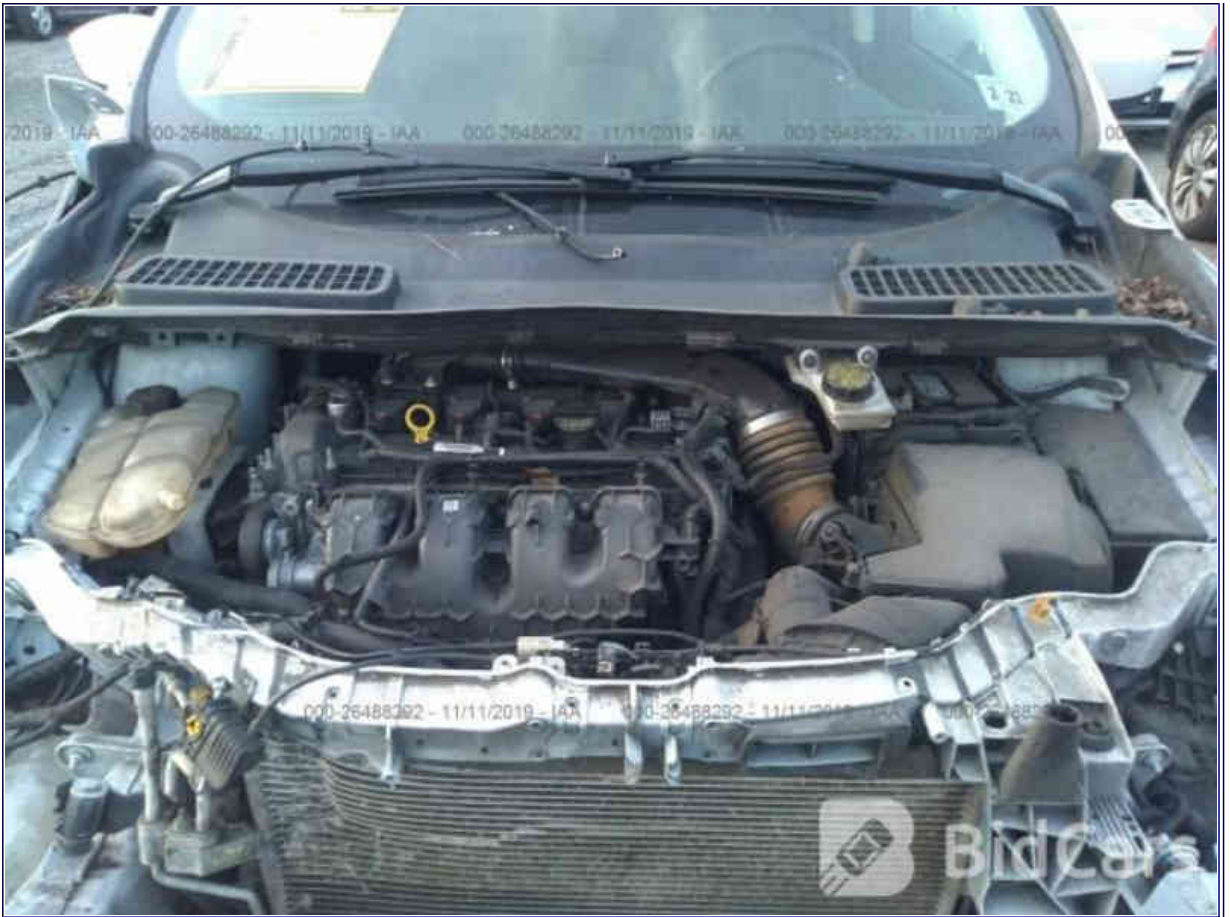
RC: 72 DSO:

WB	INT TR	TP/PS	R	AXLE	TR	SPR	FM21B	AA	000-26488292 - 11/11/2019 - IAA
105	78		4	3A	6	BBAA	20A		F0093
MADE IN U.S.A.				1201509231310		ULC			T0390
									5U5A-3520472-AA



IMAGE 9

IMAGE 10



MARKET-VALUE

VIN

1FMCU0G93GUB08696